

SURF-1 Polyclonal Antibody

Description

Product type	Primary Antibody
Code	BT-AP08683
Host	Rabbit
Isotype	IgG
Size	20ul, 50ul, 100ul
Immunogen	The antiserum was produced against synthesized peptide derived from human SURF1. AA range:171-220
Mol wt	33331
Species reactivity	Human, Mouse, Rat
Clonality	Polyclonal
Recommended application	WB, IHC-p, IF, ELISA
Concentration	1 mg/ml
Full name	SURF-1 Antibody
Synonyms	SURF1; SURF-1; Surfeit locus protein 1

This product is for research use only, not for use in human, therapeutic or diagnostic procedure.

Background

SURF1 encodes surfeit locus protein 1 localized to the inner mitochondrial membrane and thought to be involved in the biogenesis of the cytochrome c oxidase complex. Surfeit locus protein 1 is a member of the SURF1 family, which includes the related yeast protein SHY1 and rickettsial protein RP733. The gene is located in the surfeit gene cluster, a group of very tightly linked genes that do not share sequence similarity, where it shares a bidirectional promoter with SURF2 on the opposite strand. Defects in this gene are a cause of Leigh syndrome, a severe neurological disorder that is commonly associated with systemic cytochrome c oxidase deficiency.

Recommended Dilution

WB: 1: 500 - 1: 2000

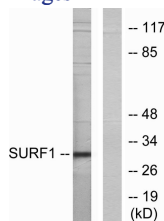
IHC: 1: 100 - 1: 300

IF: 1: 200 - 1: 1000

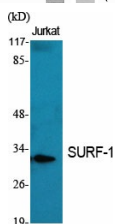
ELISA: 1: 20000

Not yet tested in other applications.

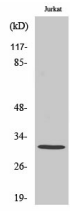
Images



Western blot analysis of lysates from Jurkat cells, using SURF1 Antibody. The lane on the right is blocked with the synthesized peptide.



Western Blot analysis of various cells using SURF-1 Polyclonal Antibody



Western Blot analysis of Jurkat cells using SURF-1 Polyclonal Antibody

Storage

-20°C for one year

501 Changsheng S Rd, Nanhu Dist, Jiaxing, Zhejiang, China

Tel: 86 21 31007137 | E-mail: save@bt-laboratory.com | www.bt-laboratory.com