

## IFN-alpha/beta R alpha(Phospho Tyr466) Polyclonal Antibody

### Description

<b>Product type</b>	Primary Antibody
<b>Code</b>	BT-AP08688
<b>Host</b>	Rabbit
<b>Isotype</b>	IgG
<b>Size</b>	20ul, 50ul, 100ul
<b>Immunogen</b>	The antiserum was produced against synthesized peptide derived from human Interferon-alpha/beta Receptor alpha around the phosphorylation site of Tyr466. AA range:436-485
<b>Mol wt</b>	63525
<b>Species reactivity</b>	Human, Rat, Mouse
<b>Clonality</b>	Polyclonal
<b>Recommended application</b>	WB, IHC-p, IF, ELISA
<b>Concentration</b>	1 mg/ml
<b>Full name</b>	Interferon alpha/beta receptor 1
<b>Synonyms</b>	Interferon alpha/beta receptor 1; IFNAR1; IFNAR; Interferon alpha/beta receptor 1; IFN-R-1; IFN-alpha/beta receptor 1; Cytokine receptor class-II member 1; Cytokine receptor family 2 member 1; CRF2-1; Type I interferon receptor 1

**This product is for research use only, not for use in human, therapeutic or diagnostic procedure.**

### Background

The protein encoded by this gene is a type I membrane protein that forms one of the two chains of a receptor for interferons alpha and beta. Binding and activation of the receptor stimulates Janus protein kinases| which in turn phosphorylate several proteins| including STAT1 and STAT2. The encoded protein also functions as an antiviral factor.

### Recommended Dilution

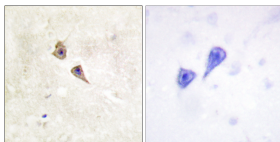
WB: 1: 500 - 1: 2000

IHC-p: 1: 100 - 1: 300

ELISA: 1: 10000

Not yet tested in other applications.

### Images



Immunohistochemistry analysis of paraffin-embedded human brain, using Interferon-alpha/beta Receptor alpha (Phospho-Tyr466) Antibody. The picture on the right is blocked with the phospho peptide.

### Storage

-20°C for 1 year