

SV2C Polyclonal Antibody

Description

Product type	Primary Antibody
Code	BT-AP08690
Host	Rabbit
Isotype	IgG
Size	20ul, 50ul, 100ul
Immunogen	Synthesized peptide derived from the Internal region of human SV2C.
Mol wt	82342
Species reactivity	Human, Mouse, Rat
Clonality	Polyclonal
Recommended application	WB, IHC-p, ELISA
Concentration	1 mg/ml
Full name	SV2C Antibody
Synonyms	SV2C; KIAA1054; Synaptic vesicle glycoprotein 2C

This product is for research use only, not for use in human, therapeutic or diagnostic procedure.

Background

SV2C (Synaptic Vesicle Glycoprotein 2C) is a Protein Coding gene. Diseases associated with SV2C include alcohol-related birth defect and foodborne botulism. Among its related pathways are Infectious disease and ECM-receptor interaction. Gene Ontology (GO) annotations related to this gene include transporter activity and transmembrane transporter activity. An important paralog of this gene is SVOP. Plays a role in the control of regulated secretion in neural and endocrine cells, enhancing selectively low-frequency neurotransmission. Positively regulates vesicle fusion by maintaining the readily releasable pool of secretory vesicles (By similarity).

Recommended Dilution

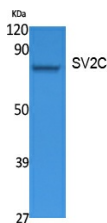
WB: 1: 500 - 1: 2000

IHC-p: 1: 100 - 300

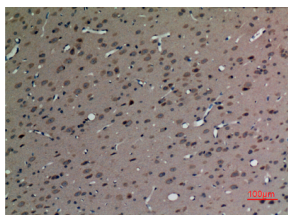
ELISA: 1: 20000

Not yet tested in other applications.

Images



Western Blot analysis of extracts from Jurkat cells, using SV2C Polyclonal Antibody. Secondary antibody was diluted at 1:20000



Immunohistochemical analysis of paraffin-embedded rat-brain, antibody was diluted at 1:100

Storage

-20°C for one year

501 Changsheng S Rd, Nanhu Dist, Jiaxing, Zhejiang, China

Tel: 86 21 31007137 | E-mail: save@bt-laboratory.com | www.bt-laboratory.com