

SVOP Polyclonal Antibody

Description

Product type	Primary Antibody
Code	BT-AP08692
Host	Rabbit
Isotype	IgG
Size	20ul, 50ul, 100ul
Immunogen	The antiserum was produced against synthesized peptide derived from human SVOP. AA range:271-320
Mol wt	60769
Species reactivity	Human, Mouse, Rat
Clonality	Polyclonal
Recommended application	WB, IHC-p, ELISA
Concentration	1 mg/ml
Full name	SVOP Antibody
Synonyms	SVOP; Synaptic vesicle 2-related protein; SV2-related protein

This product is for research use only, not for use in human, therapeutic or diagnostic procedure.

Background

SVOP (SV2 Related Protein) is a Protein Coding gene. GO annotations related to this gene include transmembrane transporter activity and ion transmembrane transporter activity. An important paralog of this gene is SV2C.

Recommended Dilution

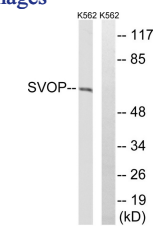
WB: 1: 500 - 1: 2000

IHC: 1: 100 - 1: 300

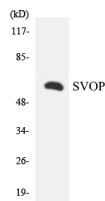
ELISA: 1: 40000

Not yet tested in other applications.

Images



Western blot analysis of lysates from K562 cells, using SVOP Antibody. The lane on the right is blocked with the synthesized peptide.



Western blot analysis of the lysates from Jurkat cells using SVOP antibody.

Storage

-20°C for one year

