

## SWAP Polyclonal Antibody

### Description

<b>Product type</b>	Primary Antibody
<b>Code</b>	BT-AP08693
<b>Host</b>	Rabbit
<b>Isotype</b>	IgG
<b>Size</b>	20ul, 50ul, 100ul
<b>Immunogen</b>	The antiserum was produced against synthesized peptide derived from human SFRS8. AA range:201-250
<b>Mol wt</b>	104821
<b>Species reactivity</b>	Human
<b>Clonality</b>	Polyclonal
<b>Recommended application</b>	WB, ELISA
<b>Concentration</b>	1 mg/ml
<b>Full name</b>	SWAP Antibody
<b>Synonyms</b>	SFSWAP; SFRS8; SWAP; Splicing factor; suppressor of white-apricot homolog; Splicing factor, arginine/serine-rich 8; Suppressor of white apricot protein homolog

**This product is for research use only, not for use in human, therapeutic or diagnostic procedure.**

### Background

SFSWAP encodes a human homolog of Drosophila splicing regulatory protein. This gene autoregulates its expression by control of splicing of its first two introns. In addition, it also regulates the splicing of fibronectin and CD45 genes. Two transcript variants encoding different isoforms have been identified.

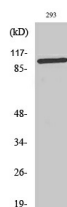
### Recommended Dilution

WB: 1: 500 - 1: 2000

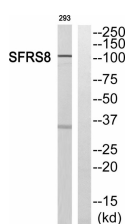
ELISA: 1: 20000

Not yet tested in other applications.

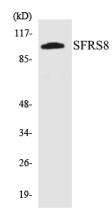
### Images



Western Blot analysis of various cells using SWAP Polyclonal Antibody cells nucleus.



Western blot analysis of SFRS8 Antibody. The lane on the right is blocked with the SFRS8 peptide.



Western blot analysis of the lysates from 293 cells using SFRS8 antibody.

### Storage

-20°C for one year

501 Changsheng S Rd, Nanhu Dist, Jiaxing, Zhejiang, China

Tel: 86 21 31007137 | E-mail: [save@bt-laboratory.com](mailto:save@bt-laboratory.com) | [www.bt-laboratory.com](http://www.bt-laboratory.com)