

## EAAT2 Polyclonal Antibody

### Description

Product type	Primary Antibody
Code	BT-AP08698
Host	Rabbit
Isotype	IgG
Size	20ul, 50ul, 100ul
Immunogen	Synthetic Peptide of EAAT2
Mol wt	N/A
Species reactivity	Human, Rat, Mouse
Clonality	Polyclonal
Recommended application	WB
Concentration	1 mg/ml
Full name	Excitatory amino acid transporter 2
Synonyms	Excitatory amino acid transporter 2 ;Glutamate/aspartate transporter II;Sodium-dependent glutamate/aspartate transporter 2;Solute carrier family 1 member 2; Excitatory amino acid transporter 2; Glutamate/aspartate transporter II; Sodium-dependent glutamate/aspartate transporter 2; Solute carrier family 1 member 2

This product is for research use only, not for use in human, therapeutic or diagnostic procedure.

### Background

This gene encodes a member of a family of solute transporter proteins. The membrane-bound protein is the principal transporter that clears the excitatory neurotransmitter glutamate from the extracellular space at synapses in the central nervous system. Glutamate clearance is necessary for proper synaptic activation and to prevent neuronal damage from excessive activation of glutamate receptors. Mutations in and decreased expression of this protein are associated with amyotrophic lateral sclerosis. Alternatively spliced transcript variants of this gene have been identified.

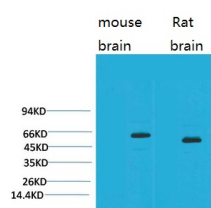
### Recommended Dilution

WB: 1: 1000 - 1: 2000

ELISA: 1: 20000

Not yet tested in other applications.

### Images



Western blot analysis of 1) Mouse Brain Tissue, 2)Rat Brain Tissue with EAAT2 Rabbit pAb diluted at 1:2,000.

### Storage

-20°C for 1 year