

Synapsin-1 Polyclonal Antibody

Description

Product type	Primary Antibody
Code	BT-AP08709
Host	Rabbit
Isotype	IgG
Size	20ul, 50ul, 100ul
Immunogen	Synthesized peptide derived from the Internal region of human Synapsin-1.
Mol wt	74111
Species reactivity	Human, Mouse, Rat
Clonality	Polyclonal
Recommended application	WB, ELISA
Concentration	1 mg/ml
Full name	Synapsin-1 Antibody
Synonyms	SYN1; Synapsin-1; Brain protein 4.1; Synapsin I

This product is for research use only, not for use in human, therapeutic or diagnostic procedure.

Background

SYN1 (synapsin I) is a member of the synapsin gene family. Synapsins encode neuronal phosphoproteins which associate with the cytoplasmic surface of synaptic vesicles. Family members are characterized by common protein domains, and they are implicated in synaptogenesis and the modulation of neurotransmitter release, suggesting a potential role in several neuropsychiatric diseases. This member of the synapsin family plays a role in regulation of axonogenesis and synaptogenesis. The protein encoded serves as a substrate for several different protein kinases and phosphorylation may function in the regulation of this protein in the nerve terminal. Mutations in SYN1 may be associated with X-linked disorders with primary neuronal degeneration such as Rett syndrome. Alternatively spliced transcript variants encoding different isoforms have been identified.

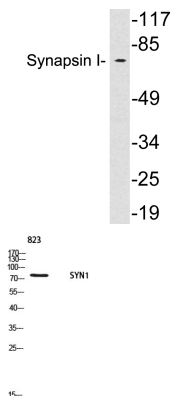
Recommended Dilution

WB: 1: 500 - 1: 2000

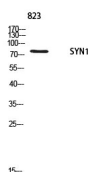
ELISA: 1: 10000

Not yet tested in other applications.

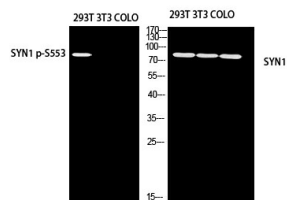
Images



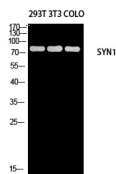
Western blot analysis of lysates from HeLa cells, using Synapsin I antibody.



Western blot analysis of 823 using SYN1 antibody. Antibody was diluted at 1:1000. Secondary antibody was diluted at 1:20000



Western blot analysis of 293T 3T3 COLO using SYN1 antibody. Antibody was diluted at 1:1000.
Secondary antibody was diluted at 1:20000



Western blot analysis of 293T 3T3 COLO using SYN1 antibody. Antibody was diluted at 1:1000.
Secondary antibody was diluted at 1:20000

Storage

-20°C for one year

501 Changsheng S Rd, Nanhu Dist, Jiaxing, Zhejiang, China

Tel: 86 21 31007137 | E-mail: save@bt-laboratory.com | www.bt-laboratory.com