

Synaptotagmin X Polyclonal Antibody

Description

Product type	Primary Antibody
Code	BT-AP08712
Host	Rabbit
Isotype	IgG
Size	20ul, 50ul, 100ul
Immunogen	Synthesized peptide derived from Synaptotagmin X . at AA range: 380-460
Mol wt	59127
Species reactivity	Human, Mouse, Rat
Clonality	Polyclonal
Recommended application	WB, ELISA
Concentration	1 mg/ml
Full name	Synaptotagmin X Antibody
Synonyms	SYT10; Synaptotagmin-10; Synaptotagmin X; SytX

This product is for research use only, not for use in human, therapeutic or diagnostic procedure.

Background

SYT10 (Synaptotagmin 10) is a Protein Coding gene. GO annotations related to this gene include calcium ion binding and identical protein binding. An important paralog of this gene is SYT5.

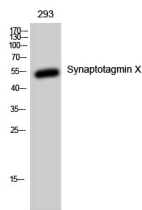
Recommended Dilution

WB: 1: 500 - 1: 2000

ELISA: 1: 20000

Not yet tested in other applications.

Images



Western Blot analysis of 293 cells using Synaptotagmin X Polyclonal Antibody

Storage

-20°C for one year