

Synaptotagmin XI Polyclonal Antibody

Description

Product type	Primary Antibody
Code	BT-AP08713
Host	Rabbit
Isotype	IgG
Size	20ul, 50ul, 100ul
Immunogen	The antiserum was produced against synthesized peptide derived from human SYT11. AA range:181-230
Mol wt	48306
Species reactivity	Human, Mouse, Rat
Clonality	Polyclonal
Recommended application	WB, ELISA
Concentration	1 mg/ml
Full name	Synaptotagmin XI Antibody
Synonyms	SYT11; KIAA0080; Synaptotagmin-11; Synaptotagmin XI; SytXI

This product is for research use only, not for use in human, therapeutic or diagnostic procedure.

Background

SYT11 is a member of the synaptotagmin gene family and encodes Synaptotagmin-11 similar to other family members that are known calcium sensors and mediate calcium-dependent regulation of membrane trafficking in synaptic transmission. The encoded protein is also a substrate for ubiquitin-E3-ligase parkin. The gene has previously been referred to as synaptotagmin XII but has been renamed synaptotagmin XI to be consistent with mouse and rat official nomenclature.

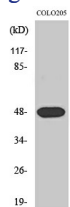
Recommended Dilution

WB: 1: 500 - 1: 2000

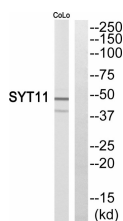
ELISA: 1: 10000

Not yet tested in other applications.

Images



Western Blot analysis of various cells using Synaptotagmin XI Polyclonal Antibody



Western blot analysis of SYT11 Antibody. The lane on the right is blocked with the SYT11 peptide.

Storage

-20°C for one year

501 Changsheng S Rd, Nanhu Dist, Jiaxing, Zhejiang, China

Tel: 86 21 31007137 | E-mail: save@bt-laboratory.com | www.bt-laboratory.com