

Synaptotagmin XIII Polyclonal Antibody

Description

Product type	Primary Antibody
Code	BT-AP08714
Host	Rabbit
Isotype	IgG
Size	20ul, 50ul, 100ul
Immunogen	The antiserum was produced against synthesized peptide derived from human SYT13. AA range:321-370
Mol wt	46885
Species reactivity	Human, Mouse, Rat
Clonality	Polyclonal
Recommended application	WB, ELISA
Concentration	1 mg/ml
Full name	Synaptotagmin XIII Antibody
Synonyms	SYT13; KIAA1427; Synaptotagmin-13; Synaptotagmin XIII; SytXIII

This product is for research use only, not for use in human, therapeutic or diagnostic procedure.

Background

SYT13 encodes a member of the large synaptotagmin protein family. Family members have an extracellular N-terminal transmembrane domain and a cytoplasmic C terminus with two tandem C2 domains (C2A and C2B). Synaptotogmin family members can form homo- and heteromeric complexes with each other. They also have different biochemical properties and developmental profiles, and patterns of tissue distribution. Synaptotagmins function as membrane traffickers in multicellular organisms. Two alternatively spliced transcript variants that encode different protein isoforms have been described for this gene.

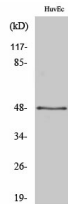
Recommended Dilution

WB: 1: 500 - 1: 2000

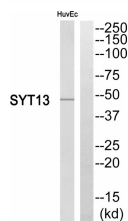
ELISA: 1: 10000

Not yet tested in other applications.

Images



Western Blot analysis of various cells using Synaptotagmin XIII Polyclonal Antibody



Western blot analysis of SYT13 Antibody. The lane on the right is blocked with the SYT13 peptide.

Storage

-20°C for one year

501 Changsheng S Rd, Nanhu Dist, Jiaxing, Zhejiang, China

Tel: 86 21 31007137 | E-mail: save@bt-laboratory.com | www.bt-laboratory.com