

## Synaptotagmin XVI Polyclonal Antibody

### Description

Product type	Primary Antibody
Code	BT-AP08715
Host	Rabbit
Isotype	IgG
Size	20ul, 50ul, 100ul
Immunogen	The antiserum was produced against synthesized peptide derived from human SYT16. AA range:231-280
Mol wt	72246
Species reactivity	Human
Clonality	Polyclonal
Recommended application	WB, ELISA
Concentration	1 mg/ml
Full name	Synaptotagmin XVI Antibody
Synonyms	SYT16; STREP14; SYT14L; SYT14R; Synaptotagmin-16; Chr14Syt; Synaptotagmin 14-like protein; Synaptotagmin XIV-related protein

This product is for research use only, not for use in human, therapeutic or diagnostic procedure.

### Background

SYT16 (Synaptotagmin 16) is a Protein Coding gene. GO annotations related to this gene include calcium ion binding and protein heterodimerization activity. An important paralog of this gene is SYT14.

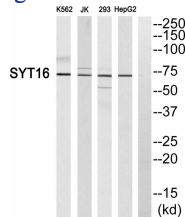
### Recommended Dilution

WB: 1: 500 - 1: 2000

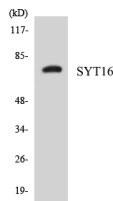
ELISA: 1: 40000

Not yet tested in other applications.

### Images



Western blot analysis of SYT16 Antibody. The lane on the right is blocked with the SYT16 peptide.



Western blot analysis of the lysates from HepG2 cells using SYT16 antibody.

### Storage

-20°C for one year

