

Syndecan-4 Polyclonal Antibody

Description

Product type	Primary Antibody
Code	BT-AP08717
Host	Rabbit
Isotype	IgG
Size	20ul, 50ul, 100ul
Immunogen	The antiserum was produced against synthesized peptide derived from human Syndecan4. AA range: 145-194
Mol wt	21642
Species reactivity	Human, Mouse, Rat
Clonality	Polyclonal
Recommended application	WB, IHC-p, IF, ELISA
Concentration	1 mg/ml
Full name	Syndecan-4 Antibody
Synonyms	SDC4; Syndecan-4; SYND4; Amphiglycan; Ryudocan core protein

This product is for research use only, not for use in human, therapeutic or diagnostic procedure.

Background

The protein encoded by SDC4 (syndecan 4) is a transmembrane (type I) heparan sulfate proteoglycan that functions as a receptor in intracellular signaling. The encoded protein is found as a homodimer and is a member of the syndecan proteoglycan family. SDC4 is found on chromosome 20, while a pseudogene has been found on chromosome 22.

Recommended Dilution

WB: 1: 500 - 1: 2000

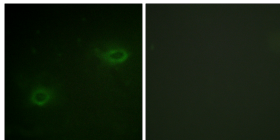
IHC: 1: 100 - 1: 300

IF: 1: 200 - 1: 1000

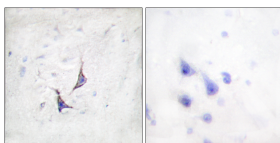
ELISA: 1: 40000

Not yet tested in other applications.

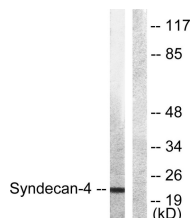
Images



Immunofluorescence analysis of HeLa cells, using Syndecan4 Antibody. The picture on the right is blocked with the synthesized peptide.

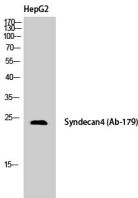


Immunohistochemistry analysis of paraffin-embedded human brain tissue, using Syndecan4 Antibody. The picture on the right is blocked with the synthesized peptide.



Western blot analysis of lysates from HepG2 cells, using Syndecan4 Antibody. The lane on the right is blocked with the synthesized peptide.

Western Blot analysis of HepG2 cells using Syndecan-4 Polyclonal Antibody



Storage

-20°C for one year

501 Changsheng S Rd, Nanhu Dist, Jiaxing, Zhejiang, China
Tel: 86 21 31007137 | E-mail: save@bt-laboratory.com | www.bt-laboratory.com