

Synuclein-Beta Polyclonal Antibody

Description

Product type	Primary Antibody
Code	BT-AP08727
Host	Rabbit
Isotype	IgG
Size	20ul, 50ul, 100ul
Immunogen	The antiserum was produced against synthesized peptide derived from human Synuclein beta. AA range:85-134
Mol wt	14288
Species reactivity	Human, Mouse, Rat
Clonality	Polyclonal
Recommended application	WB, IHC-p, IF, ELISA
Concentration	1 mg/ml
Full name	Synuclein-beta Antibody
Synonyms	SNCB; Beta-synuclein

This product is for research use only, not for use in human, therapeutic or diagnostic procedure.

Background

SNCB encodes a member of a small family of proteins that inhibit phospholipase D2 and may function in neuronal plasticity. The Beta-synuclein is abundant in lesions of patients with Alzheimer disease. A mutation in this gene was found in individuals with dementia with Lewy bodies. Alternative splicing results in multiple transcript variants.

Recommended Dilution

WB: 1: 500 - 1: 2000

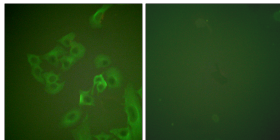
IHC: 1: 100 - 1: 300

IF: 1: 200 - 1: 1000

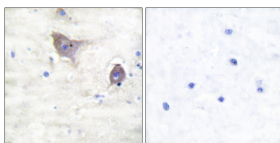
ELISA: 1: 20000

Not yet tested in other applications.

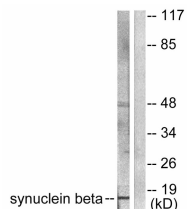
Images



Immunofluorescence analysis of A549 cells, using Synuclein beta Antibody. The picture on the right is blocked with the synthesized peptide.



Immunohistochemistry analysis of paraffin-embedded human brain tissue, using Synuclein beta Antibody. The picture on the right is blocked with the synthesized peptide.



Western blot analysis of lysates from HeLa cells, using Synuclein beta Antibody. The lane on the right is blocked with the synthesized peptide.



Western Blot analysis of various cells using Synuclein- β Polyclonal Antibody

Storage

-20°C for one year

501 Changsheng S Rd, Nanhu Dist, Jiaxing, Zhejiang, China

Tel: 86 21 31007137 | E-mail: save@bt-laboratory.com | www.bt-laboratory.com