

## SYP Polyclonal Antibody

### Description

<b>Product type</b>	Primary Antibody
<b>Code</b>	BT-AP08729
<b>Host</b>	Rabbit
<b>Isotype</b>	IgG
<b>Size</b>	20ul, 50ul, 100ul
<b>Immunogen</b>	The antiserum was produced against synthesized peptide derived from human Synaptophysin. AA range:101-150
<b>Mol wt</b>	33845
<b>Species reactivity</b>	Human, Mouse, Rat
<b>Clonality</b>	Polyclonal
<b>Recommended application</b>	WB, IHC-p, ELISA
<b>Concentration</b>	1 mg/ml
<b>Full name</b>	SYP Antibody
<b>Synonyms</b>	SYP; Synaptophysin; Major synaptic vesicle protein p38

**This product is for research use only, not for use in human, therapeutic or diagnostic procedure.**

### Background

SYP encodes an integral membrane protein of small synaptic vesicles in brain and endocrine cells. Synaptophysin also binds cholesterol and is thought to direct targeting of vesicle-associated membrane protein 2 (synaptobrevin) to intracellular compartments. Mutations in this gene are associated with X-linked mental retardation (XLMR).

### Recommended Dilution

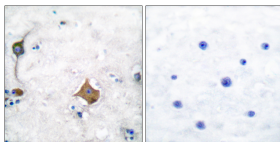
WB: 1: 500 - 1: 2000

IHC: 1: 100 - 1: 300

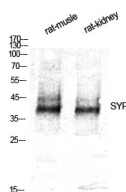
ELISA: 1: 10000

Not yet tested in other applications.

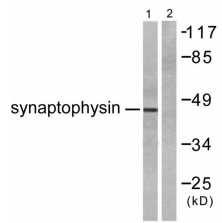
### Images



Immunohistochemistry analysis of paraffin-embedded human brain tissue, using Synaptophysin Antibody. The picture on the right is blocked with the synthesized peptide.



Western Blot analysis of various cells using SYP Polyclonal Antibody diluted at 1:500



Western blot analysis of lysates from LOVO cells, using Synaptophysin Antibody. The lane on the right is blocked with the synthesized peptide.

### Storage

-20°C for one year

501 Changsheng S Rd, Nanhu Dist, Jiaxing, Zhejiang, China

Tel: 86 21 31007137 | E-mail: [save@bt-laboratory.com](mailto:save@bt-laboratory.com) | [www.bt-laboratory.com](http://www.bt-laboratory.com)