

SYT Polyclonal Antibody

Description

Product type	Primary Antibody
Code	BT-AP08730
Host	Rabbit
Isotype	IgG
Size	20ul, 50ul, 100ul
Immunogen	The antiserum was produced against synthesized peptide derived from human SSXT. AA range:1-50
Mol wt	45929
Species reactivity	Human, Mouse, Rat
Clonality	Polyclonal
Recommended application	WB, IHC-p, ELISA
Concentration	1 mg/ml
Full name	SYT Antibody
Synonyms	SS18; SSXT; SYT; Protein SSXT; Protein SYT; Synovial sarcoma translocated to X chromosome protein

This product is for research use only, not for use in human, therapeutic or diagnostic procedure.

Background

Appears to function synergistically with RBM14 as a transcriptional coactivator. Isoform 1 and isoform 2 function in nuclear receptor coactivation. Isoform 1 and isoform 2 function in general transcriptional coactivation.

Recommended Dilution

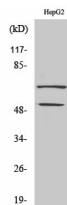
WB: 1: 500 - 1: 2000

IHC: 1: 100 - 1: 300

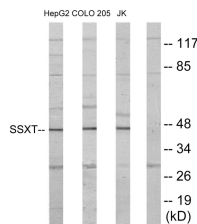
ELISA: 1: 20000

Not yet tested in other applications.

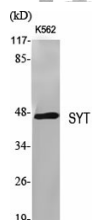
Images



Western Blot analysis of COLO205 cells using SYT Polyclonal Antibody



Western blot analysis of lysates from HepG2, Jurkat, and COLO205 cells, using SSXT Antibody. The lane on the right is blocked with the synthesized peptide.



Western Blot analysis of various cells using SYT Polyclonal Antibody

Storage

-20°C for one year

501 Changsheng S Rd, Nanhu Dist, Jiaxing, Zhejiang, China

Tel: 86 21 31007137 | E-mail: save@bt-laboratory.com | www.bt-laboratory.com