

eEF1A2 binding protein Polyclonal Antibody

Description

Product type	Primary Antibody
Code	BT-AP08735
Host	Rabbit
Isotype	IgG
Size	20ul, 50ul, 100ul
Immunogen	Recombinant Protein of eEF1A2 binding protein
Mol wt	N/A
Species reactivity	Human, Rat, Mouse, Pig
Clonality	Polyclonal
Recommended application	WB, IHC-p, IF
Concentration	1 mg/ml
Full name	Immunoglobulin-like and fibronectin type III domain-containing protein 1
Synonyms	Immunoglobulin-like and fibronectin type III domain-containing protein 1 ;EEF1A2-binding protein 1;KY-interacting protein 1; Immunoglobulin-like and fibronectin type III domain-containing protein 1; EEF1A2-binding protein 1; KY-interacting protein 1

This product is for research use only, not for use in human, therapeutic or diagnostic procedure.

Background

Contains 4 fibronectin type-III domains.,Contains 5 Ig-like (immunoglobulin-like) domains.,subunit:Interacts with KY.,tissue specificity:Expressed in skeletal muscle.,

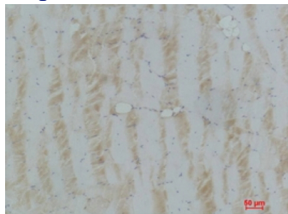
Recommended Dilution

WB: 1: 500 - 1: 2000

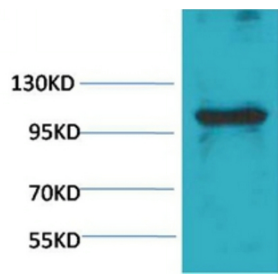
IHC: 1: 50 - 1: 200

Not yet tested in other applications.

Images



Immunohistochemical analysis of paraffin-embedded Pig Skeletal Muscle using eEF1A2Rabbit pAb diluted at 1:100



Western blot analysis of Pig Skeletal Muscle with eEF1A2 Rabbit pAb diluted at 1:1,000

Storage

-20°C for 1 year

501 Changsheng S Rd, Nanhu Dist, Jiaxing, Zhejiang, China

Tel: 86 21 31007137 | E-mail: save@bt-laboratory.com | www.bt-laboratory.com