

T1R3 Polyclonal Antibody

Description

Product type	Primary Antibody
Code	BT-AP08744
Host	Rabbit
Isotype	IgG
Size	20ul, 50ul, 100ul
Immunogen	The antiserum was produced against synthesized peptide derived from human TAS1R3. AA range:326-375
Mol wt	93386
Species reactivity	Human
Clonality	Polyclonal
Recommended application	WB, IF, ELISA
Concentration	1 mg/ml
Full name	T1R3 Antibody
Synonyms	TAS1R3; T1R3; TR3; Taste receptor type 1 member 3; Sweet taste receptor T1R3

This product is for research use only, not for use in human, therapeutic or diagnostic procedure.

Background

The protein encoded by TAS1R3 (taste 1 receptor member 3) is a G-protein coupled receptor involved in taste responses. The encoded protein can form a heterodimeric receptor with TAS1R1 to elicit the umami taste response, or it can bind with TAS1R2 to form a receptor for the sweet taste response.

Recommended Dilution

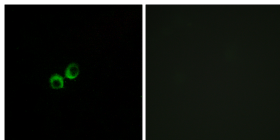
WB: 1: 500 - 1: 2000

IF: 1: 200 - 1: 1000

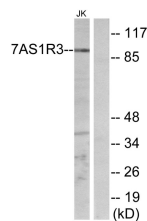
ELISA: 1: 10000

Not yet tested in other applications.

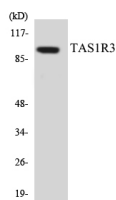
Images



Immunofluorescence analysis of MCF7 cells, using TAS1R3 Antibody. The picture on the right is blocked with the synthesized peptide.



Western blot analysis of lysates from Jurkat cells, using TAS1R3 Antibody. The lane on the right is blocked with the synthesized peptide.



Western blot analysis of the lysates from HeLa cells using TAS1R3 antibody.

Storage

-20°C for one year

501 Changsheng S Rd, Nanhu Dist, Jiaxing, Zhejiang, China

Tel: 86 21 31007137 | E-mail: save@bt-laboratory.com | www.bt-laboratory.com