

T2R3 Polyclonal Antibody

Description

Product type	Primary Antibody
Code	BT-AP08752
Host	Rabbit
Isotype	IgG
Size	20ul, 50ul, 100ul
Immunogen	The antiserum was produced against synthesized peptide derived from human TAS2R3. AA range:140-189
Mol wt	35915
Species reactivity	Human
Clonality	Polyclonal
Recommended application	IF, ELISA
Concentration	1 mg/ml
Full name	T2R3 Antibody
Synonyms	TAS2R3; Taste receptor type 2 member 3; T2R3

This product is for research use only, not for use in human, therapeutic or diagnostic procedure.

Background

TAS2R3 encodes a member of a family of candidate taste receptors that are members of the G protein-coupled receptor superfamily and that are specifically expressed by taste receptor cells of the tongue and palate epithelia. These apparently intronless taste receptor genes encode a 7-transmembrane receptor protein, functioning as a bitter taste receptor. TAS2R3 is clustered with another 3 candidate taste receptor genes in chromosome 7 and is genetically linked to loci that influence bitter perception.

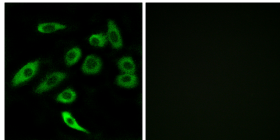
Recommended Dilution

IF: 1: 200 - 1: 1000

ELISA: 1: 20000

Not yet tested in other applications.

Images



Immunofluorescence analysis of A549 cells, using TAS2R3 Antibody. The picture on the right is blocked with the synthesized peptide.

Storage

-20°C for one year