

EGFL7 Polyclonal Antibody

Description

Product type	Primary Antibody
Code	BT-AP08755
Host	Rabbit
Isotype	IgG
Size	20ul, 50ul, 100ul
Immunogen	Synthesized peptide derived from human protein . at AA range: 140-220
Mol wt	N/A
Species reactivity	Human, Rat, Mouse
Clonality	Polyclonal
Recommended application	WB, ELISA
Concentration	1 mg/ml
Full name	Epidermal growth factor-like protein 7
Synonyms	Epidermal growth factor-like protein 7 ;EGF-like protein 7;Multiple epidermal growth factor-like domains protein 7;Multiple EGF-like domains protein 7;NOTCH4-like protein;Vascular endothelial

This product is for research use only, not for use in human, therapeutic or diagnostic procedure.

Background

This gene encodes a secreted endothelial cell protein that contains two epidermal growth factor-like domains. The encoded protein may play a role in regulating vasculogenesis. This protein may be involved in the growth and proliferation of tumor cells. Alternate splicing results in multiple transcript variants.

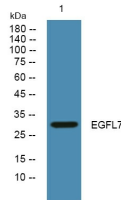
Recommended Dilution

WB: 1: 500 - 1: 2000

ELISA: 1: 5000 - 1: 20000

Not yet tested in other applications.

Images



Western blot analysis of lysates from A431 cells, primary antibody was diluted at 1:1000, 4°C overnight

Storage

-20°C for 1 year