

T2R39 Polyclonal Antibody

Description

Product type	Primary Antibody
Code	BT-AP08756
Host	Rabbit
Isotype	IgG
Size	20ul, 50ul, 100ul
Immunogen	The antiserum was produced against synthesized peptide derived from human TAS2R39. AA range:218-267
Mol wt	38626
Species reactivity	Human
Clonality	Polyclonal
Recommended application	WB, IF, ELISA
Concentration	1 mg/ml
Full name	T2R39 Antibody
Synonyms	TAS2R39; Taste receptor type 2 member 39; T2R39; Taste receptor type 2 member 57; T2R57

This product is for research use only, not for use in human, therapeutic or diagnostic procedure.

Background

Taste receptor type 2 member 39 encoded by TAS2R39 is a bitter taste receptor that detects green tea catechins, soy isoflavones, and theaflavins. The taste receptor type 2 member 39 is gustducin-linked and may activate alpha gustducin. TAS2R39 is intronless.

Recommended Dilution

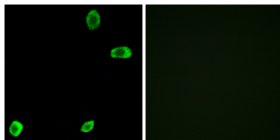
WB: 1: 500 - 1: 2000

IF: 1: 200 - 1: 1000

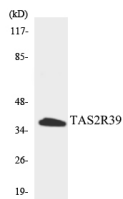
ELISA: 1: 20000

Not yet tested in other applications.

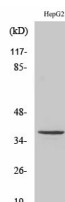
Images



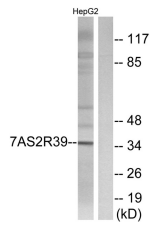
Immunofluorescence analysis of A549 cells, using TAS2R39 Antibody. The picture on the right is blocked with the synthesized peptide.



Western blot analysis of the lysates from HepG2 cells using TAS2R39 antibody.



Western Blot analysis of various cells using T2R39 Polyclonal Antibody



Western blot analysis of lysates from HepG2 cells, using TAS2R39 Antibody. The lane on the right is blocked with the synthesized peptide.

Storage

-20°C for one year

501 Changsheng S Rd, Nanhu Dist, Jiaxing, Zhejiang, China

Tel: 86 21 31007137 | E-mail: save@bt-laboratory.com | www.bt-laboratory.com