

T2R43 Polyclonal Antibody

Description

Product type	Primary Antibody
Code	BT-AP08760
Host	Rabbit
Isotype	IgG
Size	20ul, 50ul, 100ul
Immunogen	The antiserum was produced against synthesized peptide derived from human TAS2R43. AA range:124-173
Mol wt	35519
Species reactivity	Human
Clonality	Polyclonal
Recommended application	WB, ELISA
Concentration	1 mg/ml
Full name	T2R43 Antibody
Synonyms	TAS2R43; Taste receptor type 2 member 43; T2R43; Taste receptor type 2 member 52; T2R52

This product is for research use only, not for use in human, therapeutic or diagnostic procedure.

Background

TAS2R43 belongs to the large TAS2R receptor family. TAS2Rs are expressed on the surface of taste receptor cells and mediate the perception of bitterness through a G protein-coupled second messenger pathway (Conte et al. 2002 [PubMed 12584440]).

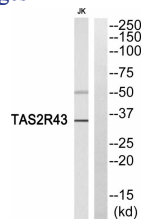
Recommended Dilution

WB: 1: 500 - 1: 2000

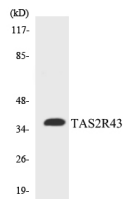
ELISA: 1: 20000

Not yet tested in other applications.

Images



Western blot analysis of TAS2R43 Antibody. The lane on the right is blocked with the TAS2R43 peptide.



Western blot analysis of the lysates from COLO205 cells using TAS2R43 antibody.

Storage

-20°C for one year

