

T2R48 Polyclonal Antibody

Description

Product type	Primary Antibody
Code	BT-AP08763
Host	Rabbit
Isotype	IgG
Size	20ul, 50ul, 100ul
Immunogen	The antiserum was produced against synthesized peptide derived from human TAS2R48. AA range:90-139
Mol wt	33908
Species reactivity	Human
Clonality	Polyclonal
Recommended application	WB, ELISA
Concentration	1 mg/ml
Full name	T2R48 Antibody
Synonyms	TAS2R19; TAS2R23; TAS2R48; Taste receptor type 2 member 19; Taste receptor type 2 member 23; Taste receptor type 2 member 48; T2R48

This product is for research use only, not for use in human, therapeutic or diagnostic procedure.

Background

Receptor that may play a role in the perception of bitterness and is gustducin-linked. May play a role in sensing the chemical composition of the gastrointestinal content. The activity of this receptor may stimulate alpha gustducin, mediate PLC-beta-2 activation and lead to the gating of TRPM5.

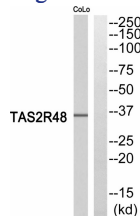
Recommended Dilution

WB: 1: 500 - 1: 2000

ELISA: 1: 20000

Not yet tested in other applications.

Images



Western blot analysis of TAS2R48 Antibody. The lane on the right is blocked with the TAS2R48 peptide.

Storage

-20°C for one year