

## T2R49 Polyclonal Antibody

### Description

<b>Product type</b>	Primary Antibody
<b>Code</b>	BT-AP08764
<b>Host</b>	Rabbit
<b>Isotype</b>	IgG
<b>Size</b>	20ul, 50ul, 100ul
<b>Immunogen</b>	The antiserum was produced against synthesized peptide derived from human TAS2R49. AA range:94-143
<b>Mol wt</b>	35358
<b>Species reactivity</b>	Human
<b>Clonality</b>	Polyclonal
<b>Recommended application</b>	WB, IF, ELISA
<b>Concentration</b>	1 mg/ml
<b>Full name</b>	T2R49 Antibody
<b>Synonyms</b>	TAS2R20; TAS2R49; Taste receptor type 2 member 20; Taste receptor type 2 member 49; T2R49; Taste receptor type 2 member 56; T2R56

**This product is for research use only, not for use in human, therapeutic or diagnostic procedure.**

### Background

TAS2R20 encodes a member of the taste receptor two family of class C G-protein coupled receptors. Receptors of this family have a short extracellular N-terminus, seven transmembrane helices, three extracellular loops and three intracellular loops, and an intracellular C-terminus. Members of this family are expressed in a subset of taste receptor cells, where they function in bitter taste reception, as well as in non-gustatory cells including those of the brain, reproductive organs, respiratory system, and gastrointestinal system. This gene maps to the taste receptor gene cluster on chromosome 12p13.

### Recommended Dilution

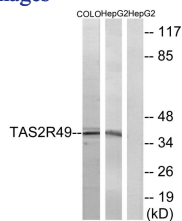
WB: 1: 500 - 1: 2000

IF: 1: 200 - 1: 1000

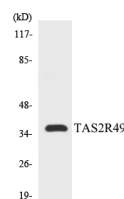
ELISA: 1: 20000

Not yet tested in other applications.

### Images



Western blot analysis of lysates from COLO and HepG2 cells, using TAS2R49 Antibody. The lane on the right is blocked with the synthesized peptide.



Western blot analysis of the lysates from COLO205 cells using TAS2R49 antibody.

## Storage

-20°C for one year

501 Changsheng S Rd, Nanhu Dist, Jiaxing, Zhejiang, China

Tel: 86 21 31007137 | E-mail: [save@bt-laboratory.com](mailto:save@bt-laboratory.com) | [www.bt-laboratory.com](http://www.bt-laboratory.com)