

EGFR Polyclonal Antibody

Description

Product type	Primary Antibody
Code	BT-AP08766
Host	Rabbit
Isotype	IgG
Size	20ul, 50ul, 100ul
Immunogen	The antiserum was produced against synthesized peptide derived from human EGFR. AA range:991-1040
Mol wt	134277
Species reactivity	Human, Mouse, Rat
Clonality	Polyclonal
Recommended application	WB, ELISA
Concentration	1 mg/ml
Full name	Epidermal growth factor receptor
Synonyms	Epidermal growth factor receptor; EGFR; ERBB; ERBB1; HER1; Epidermal growth factor receptor; Proto-oncogene c-ErbB-1; Receptor tyrosine-protein kinase erbB-1

This product is for research use only, not for use in human, therapeutic or diagnostic procedure.

Background

The protein encoded by this gene is a transmembrane glycoprotein that is a member of the protein kinase superfamily. This protein is a receptor for members of the epidermal growth factor family. EGFR is a cell surface protein that binds to epidermal growth factor. Binding of the protein to a ligand induces receptor dimerization and tyrosine autophosphorylation and leads to cell proliferation. Mutations in this gene are associated with lung cancer.

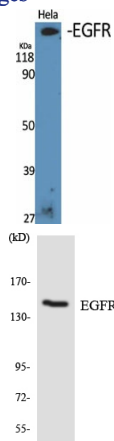
Recommended Dilution

WB: 1: 500 - 1: 2000

ELISA: 1: 10000

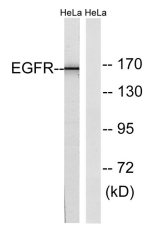
Not yet tested in other applications.

Images

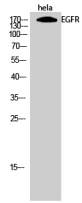


Western Blot analysis of various cells using EGFR Polyclonal Antibody diluted at 1:2000

Western Blot analysis of hela cells using EGFR Polyclonal Antibody diluted at 1:2000



Western blot analysis of lysates from HeLa cells, using EGFR Antibody. The lane on the right is blocked with the synthesized peptide.



Western blot analysis of the lysates from HeLa cells using EGFR antibody.

Storage

-20°C for 1 year

501 Changsheng S Rd, Nanhu Dist, Jiaxing, Zhejiang, China

Tel: 86 21 31007137 | E-mail: save@bt-laboratory.com | www.bt-laboratory.com