

T2R7 Polyclonal Antibody

Description

Product type	Primary Antibody
Code	BT-AP08768
Host	Rabbit
Isotype	IgG
Size	20ul, 50ul, 100ul
Immunogen	The antiserum was produced against synthesized peptide derived from human TAS2R7. AA range:47-96
Mol wt	36550
Species reactivity	Human
Clonality	Polyclonal
Recommended application	WB, IF, ELISA
Concentration	1 mg/ml
Full name	T2R7 Antibody
Synonyms	TAS2R7; Taste receptor type 2 member 7; T2R7; Taste receptor family B member 4; TRB4

This product is for research use only, not for use in human, therapeutic or diagnostic procedure.

Background

TAS2R7 product belongs to the family of candidate taste receptors that are members of the G-protein-coupled receptor superfamily. These proteins are specifically expressed in the taste receptor cells of the tongue and palate epithelia. They are organized in the genome in clusters and are genetically linked to loci that influence bitter perception in mice and humans. In functional expression studies, they respond to bitter tastants. TAS2R7 maps to the taste receptor gene cluster on chromosome 12p13.

Recommended Dilution

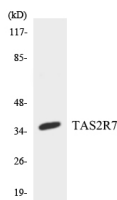
WB: 1: 500 - 1: 2000

IF: 1: 200 - 1: 1000

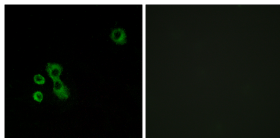
ELISA: 1: 20000

Not yet tested in other applications.

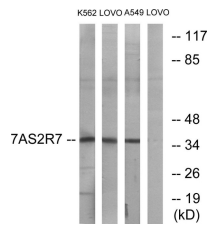
Images



Western blot analysis of the lysates from HepG2 cells using TAS2R7 antibody.



Immunofluorescence analysis of MCF7 cells, using TAS2R7 Antibody. The picture on the right is blocked with the synthesized peptide.



Western blot analysis of lysates from K562, LOVO, and A549 cells, using TAS2R7 Antibody. The lane on the right is blocked with the synthesized peptide.

Storage

-20°C for one year

501 Changsheng S Rd, Nanhu Dist, Jiaxing, Zhejiang, China

Tel: 86 21 31007137 | E-mail: save@bt-laboratory.com | www.bt-laboratory.com