

## T3JAM Polyclonal Antibody

### Description

<b>Product type</b>	Primary Antibody
<b>Code</b>	BT-AP08770
<b>Host</b>	Rabbit
<b>Isotype</b>	IgG
<b>Size</b>	20ul, 50ul, 100ul
<b>Immunogen</b>	The antiserum was produced against synthesized peptide derived from human T3JAM. AA range:251-300
<b>Mol wt</b>	63626
<b>Species reactivity</b>	Human, Mouse, Rat
<b>Clonality</b>	Polyclonal
<b>Recommended application</b>	WB, IHC-p, IF, ELISA
<b>Concentration</b>	1 mg/ml
<b>Full name</b>	T3JAM Antibody
<b>Synonyms</b>	TRAF3IP3; T3JAM; TRAF3-interacting JNK-activating modulator; TRAF3-interacting protein 3

**This product is for research use only, not for use in human, therapeutic or diagnostic procedure.**

### Background

TRAF3IP3 encodes TRAF3-interacting JNK-activating modulator that mediates cell growth by modulating the c-Jun N-terminal kinase signal transduction pathway. The TRAF3-interacting JNK-activating modulator may also interact with a large multi-protein assembly containing the phosphatase 2A catalytic subunit. Alternative splicing results in multiple transcript variants.

### Recommended Dilution

WB: 1: 500 - 1: 2000

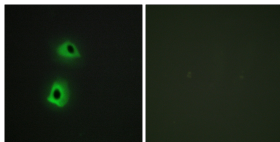
IHC: 1: 100 - 1: 300

IF: 1: 200 - 1: 1000

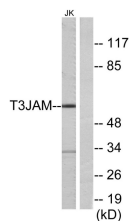
ELISA: 1: 20000

Not yet tested in other applications.

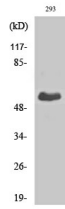
### Images



Immunofluorescence analysis of HeLa cells, using T3JAM Antibody. The picture on the right is blocked with the synthesized peptide.



Western blot analysis of lysates from Jurkat cells, using T3JAM Antibody. The lane on the right is blocked with the synthesized peptide.



## Western Blot analysis of various cells using T3JAM Polyclonal Antibody

### Storage

-20°C for one year

501 Changsheng S Rd, Nanhu Dist, Jiaxing, Zhejiang, China

Tel: 86 21 31007137 | E-mail: [save@bt-laboratory.com](mailto:save@bt-laboratory.com) | [www.bt-laboratory.com](http://www.bt-laboratory.com)