

TAAR3 Polyclonal Antibody

Description

Product type	Primary Antibody
Code	BT-AP08777
Host	Rabbit
Isotype	IgG
Size	20ul, 50ul, 100ul
Immunogen	The antiserum was produced against synthesized peptide derived from human TAAR3. AA range:206-255
Mol wt	39065
Species reactivity	Human
Clonality	Polyclonal
Recommended application	WB, IF, ELISA
Concentration	1 mg/ml
Full name	TAAR3 Antibody
Synonyms	TAAR3; GPR57; Putative trace amine-associated receptor 3; TaR-3; Trace amine receptor 3; G-protein coupled receptor 57

This product is for research use only, not for use in human, therapeutic or diagnostic procedure.

Background

TAAR3 (Trace Amine Associated Receptor 3 (Gene/Pseudogene)) is a Protein Coding gene. Among its related pathways are Signaling by GPCR and Peptide ligand-binding receptors. Gene Ontology (GO) annotations related to this gene include G-protein coupled receptor activity and trace-amine receptor activity. Olfactory receptor activated by several primary trace amines, including isoamylamine. Activated by isoamylamine and cyclohexylamine, but not to the corresponding alcohols, isoamylalcohol and cyclohexanol. This receptor is probably mediated by the G(s)-class of G-proteins which activate adenylate cyclase (By similarity).

Recommended Dilution

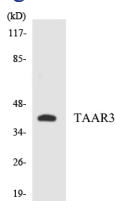
WB: 1: 500 - 1: 2000

IF: 1: 200 - 1: 1000

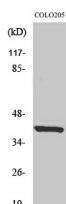
ELISA: 1: 10000

Not yet tested in other applications.

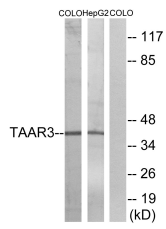
Images



Western blot analysis of the lysates from HepG2 cells using TAAR3 antibody.



Western Blot analysis of various cells using TAAR3 Polyclonal Antibody



Western blot analysis of lysates from COLO and HepG2 cells, using TAAR3 Antibody. The lane on the right is blocked with the synthesized peptide.

Storage

-20°C for one year

501 Changsheng S Rd, Nanhu Dist, Jiaxing, Zhejiang, China

Tel: 86 21 31007137 | E-mail: save@bt-laboratory.com | www.bt-laboratory.com