

TAF I p48 Polyclonal Antibody

Description

Product type	Primary Antibody
Code	BT-AP08789
Host	Rabbit
Isotype	IgG
Size	20ul, 50ul, 100ul
Immunogen	The antiserum was produced against synthesized peptide derived from human TAF1A. AA range:301-350
Mol wt	52676
Species reactivity	Human, Rat
Clonality	Polyclonal
Recommended application	WB, IHC-p, ELISA
Concentration	1 mg/ml
Full name	TAF I p48 Antibody
Synonyms	TAF1A; TATA box-binding protein-associated factor RNA polymerase I subunit A; RNA polymerase I-specific TBP-associated factor 48 kDa; TAFI48; TATA box-binding protein-associated factor 1A; TBP-associat

This product is for research use only, not for use in human, therapeutic or diagnostic procedure.

Background

TAF1A (TATA-box binding protein associated factor, RNA polymerase I subunit A) encodes a subunit of the RNA polymerase I complex, Selectivity Factor I (SLI). The encoded protein is a TATA box-binding protein-associated factor that plays a role in the assembly of the RNA polymerase I preinitiation complex. Alternate splicing results in multiple transcript variants encoding multiple isoforms.

Recommended Dilution

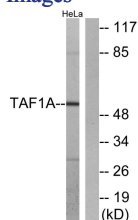
WB: 1: 500 - 1: 2000

IHC: 1: 100 - 1: 300

ELISA: 1: 20000

Not yet tested in other applications.

Images



Western blot analysis of lysates from HeLa cells, using TAF1A Antibody. The lane on the right is blocked with the synthesized peptide.

Storage

-20°C for one year