

IGF-IR(Phospho Tyr1161) Polyclonal Antibody

Description

Product type	Primary Antibody
Code	BT-AP08801
Host	Rabbit
Isotype	IgG
Size	20ul, 50ul, 100ul
Immunogen	Synthesized phospho-peptide around the phosphorylation site of human IGF-IR (phospho Tyr1161)
Mol wt	154793
Species reactivity	Human, Mouse, Rat
Clonality	Polyclonal
Recommended application	WB, IHC-p, IF, ICC, ELISA
Concentration	1 mg/ml
Full name	Insulin-like growth factor 1 receptor
Synonyms	Insulin-like growth factor 1 receptor; IGF1R; Insulin-like growth factor 1 receptor; Insulin-like growth factor I receptor; IGF-I receptor; CD antigen CD221; INSR; Insulin receptor; IR; CD antigen CD220

This product is for research use only, not for use in human, therapeutic or diagnostic procedure.

Background

This receptor binds insulin-like growth factor with a high affinity. It has tyrosine kinase activity. The insulin-like growth factor I receptor plays a critical role in transformation events. Cleavage of the precursor generates alpha and beta subunits. It is highly overexpressed in most malignant tissues where it functions as an anti-apoptotic agent by enhancing cell survival. Alternatively spliced transcript variants encoding distinct isoforms have been found for this gene.

Recommended Dilution

WB: 1: 500 - 1: 2000

IHC-p: 1: 100 - 1: 300

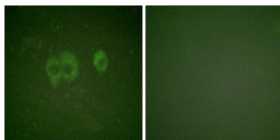
IF: 1: 200 - 1: 1000

ICC: 1: 200 - 1: 1000

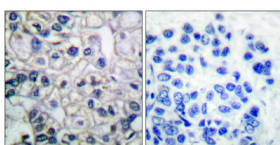
ELISA: 1: 40000

Not yet tested in other applications.

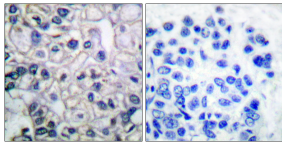
Images



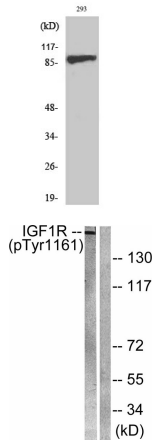
Immunofluorescence analysis of HuvEc cell, using IGF1R (Phospho-Tyr1161) Antibody. The lane on the right is blocked with the IGF1R (Phospho-Tyr1161) peptide.



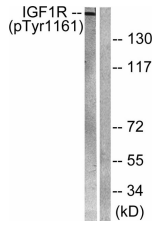
Immunohistochemical analysis of paraffin-embedded Human breast cancer. Antibody was diluted at 1:100(4°C overnight). High-pressure and temperature Tris-EDTA,pH8.0 was used for antigen retrieval. Negative control (right) obtained from antibody was pre-absorbed by immunogen peptide.



Immunohistochemistry analysis of paraffin-embedded human breast cancer, using IGF1R (Phospho-Tyr1161) Antibody. The picture on the right is blocked with the IGF1R (Phospho-Tyr1161) peptide.



Western Blot analysis of various cells using Phospho-IGF-IR (Y1161) Polyclonal Antibody diluted at 1:500



Western blot analysis of IGF1R (Phospho-Tyr1161) Antibody. The lane on the right is blocked with the IGF1R (Phospho-Tyr1161) peptide.

Storage

-20°C for 1 year

501 Changsheng S Rd, Nanhu Dist, Jiaxing, Zhejiang, China

Tel: 86 21 31007137 | E-mail: save@bt-laboratory.com | www.bt-laboratory.com