

Tafazzin Polyclonal Antibody

Description

Product type	Primary Antibody
Code	BT-AP08806
Host	Rabbit
Isotype	IgG
Size	20ul, 50ul, 100ul
Immunogen	Synthesized peptide derived from the Internal region of human Tafazzin.
Mol wt	33459
Species reactivity	Human
Clonality	Polyclonal
Recommended application	WB, ELISA
Concentration	1 mg/ml
Full name	Tafazzin Antibody
Synonyms	TAZ; EFE2; G4.5; Tafazzin; Protein G4.5

This product is for research use only, not for use in human, therapeutic or diagnostic procedure.

Background

TAZ (tafazzin) encodes a protein that is expressed at high levels in cardiac and skeletal muscle. Mutations in TAZ have been associated with a number of clinical disorders including Barth syndrome, dilated cardiomyopathy (DCM), hypertrophic DCM, endocardial fibroelastosis, and left ventricular noncompaction (LVNC). Multiple transcript variants encoding different isoforms have been described. A long form and a short form of each of these isoforms is produced; the short form lacks a hydrophobic leader sequence and may exist as a cytoplasmic protein rather than being membrane-bound. Other alternatively spliced transcripts have been described but the full-length nature of all these transcripts is not known.

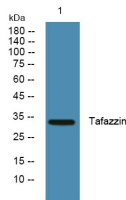
Recommended Dilution

WB: 1: 500 - 1: 2000

ELISA: 1: 5000

Not yet tested in other applications.

Images



Western blot analysis of lysates from SH-SY5Y cells, primary antibody was diluted at 1:1000, 4° over night

Storage

-20°C for one year