

TAFI Polyclonal Antibody

Description

Product type	Primary Antibody
Code	BT-AP08807
Host	Rabbit
Isotype	IgG
Size	20ul, 50ul, 100ul
Immunogen	The antiserum was produced against synthesized peptide derived from human CPB2. AA range:321-370
Mol wt	48412
Species reactivity	Human
Clonality	Polyclonal
Recommended application	WB, ELISA
Concentration	1 mg/ml
Full name	TAFI Antibody
Synonyms	CPB2; Carboxypeptidase B2; Carboxypeptidase U; CPU; Plasma carboxypeptidase B; pCPB; Thrombin-activable fibrinolysis inhibitor; TAFI

This product is for research use only, not for use in human, therapeutic or diagnostic procedure.

Background

Carboxypeptidases are enzymes that hydrolyze C-terminal peptide bonds. The carboxypeptidase family includes metallo-, serine, and cysteine carboxypeptidases. According to their substrate specificity, these enzymes are referred to as carboxypeptidase A (cleaving aliphatic residues) or carboxypeptidase B (cleaving basic amino residues). The carboxypeptidase B2 encoded by CPB2 is activated by trypsin and acts on carboxypeptidase B substrates. After thrombin activation, the mature protein downregulates fibrinolysis. Polymorphisms have been described for CPB2 and its promoter region. Alternate splicing results in multiple transcript variants.

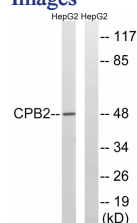
Recommended Dilution

WB: 1: 500 - 1: 2000

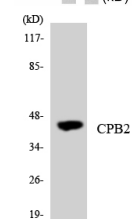
ELISA: 1: 40000

Not yet tested in other applications.

Images



Western blot analysis of lysates from HepG2 cells, using CPB2 Antibody. The lane on the right is blocked with the synthesized peptide.



Western blot analysis of the lysates from K562 cells using CPB2 antibody.

Storage

-20°C for one year

501 Changsheng S Rd, Nanhu Dist, Jiaxing, Zhejiang, China

Tel: 86 21 31007137 | E-mail: save@bt-laboratory.com | www.bt-laboratory.com