

IGF-IR(Phospho Tyr1161) Polyclonal Antibody

Description

Product type	Primary Antibody
Code	BT-AP08809
Host	Rabbit
Isotype	IgG
Size	20ul, 50ul, 100ul
Immunogen	The antiserum was produced against synthesized peptide derived from human IGF1R around the phosphorylation site of Tyr1161. AA range:1131-1180
Mol wt	154793
Species reactivity	Human, Mouse, Rat
Clonality	Polyclonal
Recommended application	WB, IHC-p, IF, IP, ELISA
Concentration	1 mg/ml
Full name	Insulin-like growth factor 1 receptor
Synonyms	Insulin-like growth factor 1 receptor; IGF1R; Insulin-like growth factor 1 receptor; Insulin-like growth factor 1 receptor; IGF-I receptor; CD antigen CD221; INSR; Insulin receptor; IR; CD antigen CD220

This product is for research use only, not for use in human, therapeutic or diagnostic procedure.

Background

This receptor binds insulin-like growth factor with a high affinity. It has tyrosine kinase activity. The insulin-like growth factor I receptor plays a critical role in transformation events. Cleavage of the precursor generates alpha and beta subunits. It is highly overexpressed in most malignant tissues where it functions as an anti-apoptotic agent by enhancing cell survival. Alternatively spliced transcript variants encoding distinct isoforms have been found for this gene.

Recommended Dilution

WB: 1: 500 - 1: 2000

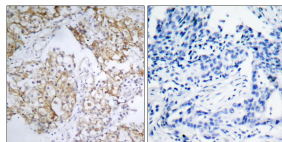
IP: 2 - 5 ug: mg

IHC-p: 1: 100 - 1: 300

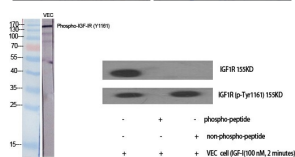
ELISA: 1: 20000

Not yet tested in other applications.

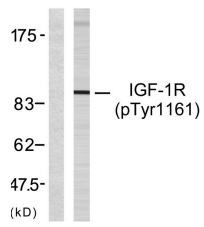
Images



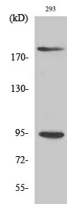
Immunohistochemistry analysis of paraffin-embedded human breast carcinoma, using IGF1R (Phospho-Tyr1161) Antibody. The picture on the right is blocked with the phospho peptide.



Western Blot analysis of various cells using Phospho-IGF-IR (Y1161) Polyclonal Antibody diluted at 1:2000



Western Blot analysis of 293 cells using Phospho-IGF-1R (Y1161) Polyclonal Antibody diluted at 1:2000



Western blot analysis of lysates from 293 cells treated with Insulin, using IGF1R (Phospho-Tyr1161) Antibody. The lane on the left is blocked with the phospho peptide.

Storage

-20°C for 1 year

501 Changsheng S Rd, Nanhu Dist, Jiaxing, Zhejiang, China

Tel: 86 21 31007137 | E-mail: save@bt-laboratory.com | www.bt-laboratory.com