

TAL1 Polyclonal Antibody

Description

Product type	Primary Antibody
Code	BT-AP08813
Host	Rabbit
Isotype	IgG
Size	20ul, 50ul, 100ul
Immunogen	The antiserum was produced against synthesized peptide derived from human TAL-1. AA range:96-145
Mol wt	34271
Species reactivity	Human, Mouse
Clonality	Polyclonal
Recommended application	WB, IHC-p, ELISA
Concentration	1 mg/ml
Full name	TAL1 Antibody
Synonyms	TAL1; BHLHA17; SCL; TCL5; T-cell acute lymphocytic leukemia protein 1; TAL-1; Class A basic helix-loop-helix protein 17; bHLHa17; Stem cell protein; T-cell leukemia/lymphoma protein 5

This product is for research use only, not for use in human, therapeutic or diagnostic procedure.

Background

The basic helix-loop-helix (bHLH) family of transcription factors play roles in a variety of developmental and adult biological settings. The basic (b) domain of bHLH transcription factors allows association with DNA, while the HLH domain facilitates the mono- and heterodimeric interactions required for efficient DNA binding. TAL1, also known as SCL, is a bHLH transcription factor that plays an essential role in the generation of embryonic hematopoietic stem cells, and is required for maturation of erythroid and megakaryocytic lineages in the adult. TAL1 interacts with Lim-domain containing proteins LMO2 and Ldb1, and has been found in complexes with these proteins as well as the hematopoietic transcription factor GATA-1. Both TAL1 and LMO2 have been associated with T-cell acute lymphoblastic leukemia (T-ALL). TAL1 activity is essential for both hematopoiesis and neurogenesis.

Recommended Dilution

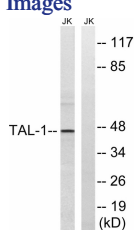
WB: 1: 500 - 1: 2000

IHC: 1: 100 - 1: 300

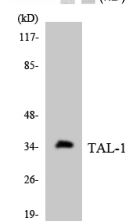
ELISA: 1: 20000

Not yet tested in other applications.

Images



Western blot analysis of lysates from Jurkat cells, treated with PMA 125ng/ml 30', using TAL-1 Antibody. The lane on the right is blocked with the synthesized peptide.



Western blot analysis of the lysates from HT-29 cells using TAL-1 antibody.

Storage

-20°C for one year

501 Changsheng S Rd, Nanhu Dist, Jiaxing, Zhejiang, China

Tel: 86 21 31007137 | E-mail: save@bt-laboratory.com | www.bt-laboratory.com