

## TALL-1 Polyclonal Antibody

### Description

<b>Product type</b>	Primary Antibody
<b>Code</b>	BT-AP08819
<b>Host</b>	Rabbit
<b>Isotype</b>	IgG
<b>Size</b>	20ul, 50ul, 100ul
<b>Immunogen</b>	The antiserum was produced against synthesized peptide derived from the Internal region of human TNFSF13B. AA range:151-200
<b>Mol wt</b>	31223
<b>Species reactivity</b>	Human, Mouse
<b>Clonality</b>	Polyclonal
<b>Recommended application</b>	WB, IHC-p, ELISA
<b>Concentration</b>	1 mg/ml
<b>Full name</b>	TALL-1 Antibody
<b>Synonyms</b>	TNFSF13B; BAFF; BLYS; TALL1; TNFSF20; ZTNF4; Tumor necrosis factor ligand superfamily member 13B; B lymphocyte stimulator; BLyS; B-cell-activating factor; BAFF;Dendritic cell-derived TNF-like molecule

**This product is for research use only, not for use in human, therapeutic or diagnostic procedure.**

### Background

Tumor necrosis factor ligand superfamily member 13B encoded by TNFSF13B is a cytokine that belongs to the tumor necrosis factor (TNF) ligand family. This cytokine is a ligand for receptors TNFRSF13B/TACI, TNFRSF17/BCMA, and TNFRSF13C/BAFFR. This cytokine is expressed in B cell lineage cells, and acts as a potent B cell activator. It has been also shown to play an important role in the proliferation and differentiation of B cells. Alternatively spliced transcript variants encoding distinct isoforms have been identified.

### Recommended Dilution

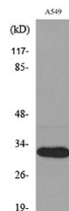
WB: 1: 500 - 1: 2000

IHC-p: 1: 100 - 300

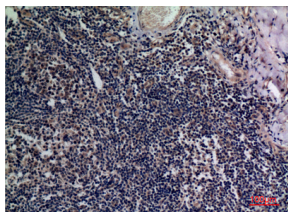
ELISA: 1: 20000

Not yet tested in other applications.

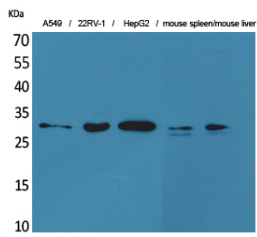
### Images



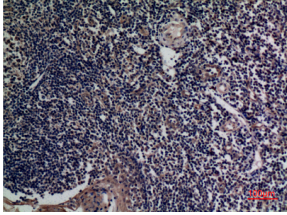
Western blot analysis of lysate from A549 cells, using TNFSF13B Antibody.



Immunohistochemical analysis of paraffin-embedded human-tonsils, antibody was diluted at 1:100



Western Blot analysis of A549, 22RV-1, HepG2, mouse spleen, mouse liver cells using TALL-1 Polyclonal Antibody. Secondary antibody was diluted at 1:20000



Immunohistochemical analysis of paraffin-embedded human-tonsils, antibody was diluted at 1:100

### Storage

-20°C for one year

501 Changsheng S Rd, Nanhu Dist, Jiaxing, Zhejiang, China

Tel: 86 21 31007137 | E-mail: [save@bt-laboratory.com](mailto:save@bt-laboratory.com) | [www.bt-laboratory.com](http://www.bt-laboratory.com)