

IGF-IR(Phospho Tyr1346) Polyclonal Antibody

Description

Product type	Primary Antibody
Code	BT-AP08820
Host	Rabbit
Isotype	IgG
Size	20ul, 50ul, 100ul
Immunogen	The antiserum was produced against synthesized peptide derived from human IGF1R around the phosphorylation site of Tyr1346. AA range:1311-1360
Mol wt	154793
Species reactivity	Human, Mouse, Rat
Clonality	Polyclonal
Recommended application	IHC-p, IF, ELISA
Concentration	1 mg/ml
Full name	Insulin-like growth factor 1 receptor
Synonyms	Insulin-like growth factor 1 receptor; IGF1R; Insulin-like growth factor 1 receptor; Insulin-like growth factor 1 receptor; IGF-1 receptor; CD antigen CD221

This product is for research use only, not for use in human, therapeutic or diagnostic procedure.

Background

This receptor binds insulin-like growth factor with a high affinity. It has tyrosine kinase activity. The insulin-like growth factor I receptor plays a critical role in transformation events. Cleavage of the precursor generates alpha and beta subunits. It is highly overexpressed in most malignant tissues where it functions as an anti-apoptotic agent by enhancing cell survival. Alternatively spliced transcript variants encoding distinct isoforms have been found for this gene.

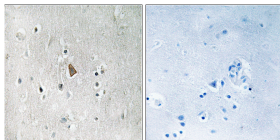
Recommended Dilution

IHC-p: 1: 100 - 1: 300

ELISA: 1: 40000

Not yet tested in other applications.

Images



Immunohistochemistry analysis of paraffin-embedded human brain, using IGF1R (Phospho-Tyr1346) Antibody. The picture on the right is blocked with the phospho peptide.

Storage

-20°C for 1 year