

CXXC4 Rabbit Polyclonal Antibody

Description

Product type	Primary Antibody
Code	BT-AP08822
Host	Rabbit
Isotype	IgG
Size	20ul, 50ul, 100ul
Immunogen	Synthesized peptide derived from human CXXC4
Mol wt	21780
Species reactivity	Human, Mouse, Rat
Clonality	Polyclonal
Recommended application	WB
Concentration	1 mg/ml
Full name	CXXC4
Synonyms	CXXC4

This product is for research use only, not for use in human, therapeutic or diagnostic procedure.

Background

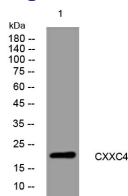
This gene encodes a CXXC-type zinc finger domain-containing protein that functions as an antagonist of the canonical wingless/integrated signaling pathway. The encoded protein negatively regulates wingless/integrated signaling through interaction with the post synaptic density protein/ Drosophila disc large tumor suppressor/ zonula occludens-1 protein domain of Dishevelled| a scaffolding protein required for the stabilization of the transcriptional co-activator beta-catenin. In addition| the CXXC domain of this protein has been shown to bind unmethylated CpG dinucleotides| localize to promoters and CpG islands| and interact with the catalytic domain of methylcytosine dioxygenase ten-eleven-translocation 2| an iron and alpha-ketoglutarate-dependent dioxygenase that modifies the methylation status of DNA. In humans| a mutation in this gene has been associated with development of malignant renal cell carcinoma. Alternative splicing results in multiple transcript variants.

Recommended Dilution

WB: 1: 500 - 1: 2000

Not yet tested in other applications.

Images



Western blot analysis of lysates from HEK293 cells, primary antibody was diluted at 1:1000, 4°C overnight

Storage

-20°C for 1 year