

TASK-5 Polyclonal Antibody

Description

Product type	Primary Antibody
Code	BT-AP08826
Host	Rabbit
Isotype	IgG
Size	20ul, 50ul, 100ul
Immunogen	The antiserum was produced against synthesized peptide derived from human KCNK15. AA range:273-322
Mol wt	36130
Species reactivity	Human
Clonality	Polyclonal
Recommended application	WB, IHC-p, ELISA
Concentration	1 mg/ml
Full name	TASK-5 Antibody
Synonyms	KCNK15; TASK5; Potassium channel subfamily K member 15; Acid-sensitive potassium channel protein TASK-5; TWIK-related acid-sensitive K(+) channel 5; Two pore potassium channel KT3.3; Two pore K(+) cha

This product is for research use only, not for use in human, therapeutic or diagnostic procedure.

Background

KCNK15 encodes one of the members of the superfamily of potassium channel proteins containing two pore-forming P domains. The product of this gene has not been shown to be a functional channel, however, it may require other non-pore-forming proteins for activity.

Recommended Dilution

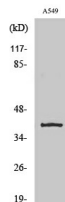
WB: 1: 500 - 1: 2000

IHC: 1: 100 - 1: 300

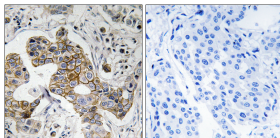
ELISA: 1: 20000

Not yet tested in other applications.

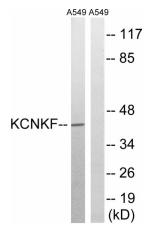
Images



Western Blot analysis of various cells using TASK-5 Polyclonal Antibody diluted at 1:1000



Immunohistochemistry analysis of paraffin-embedded human breast carcinoma tissue, using KCNK15 Antibody. The picture on the right is blocked with the synthesized peptide.



Western blot analysis of lysates from A549 cells, using KCNK15 Antibody. The lane on the right is blocked with the synthesized peptide.

Storage

-20°C for one year

501 Changsheng S Rd, Nanhu Dist, Jiaxing, Zhejiang, China

Tel: 86 21 31007137 | E-mail: save@bt-laboratory.com | www.bt-laboratory.com