

TAT Polyclonal Antibody

Description

Product type	Primary Antibody
Code	BT-AP08827
Host	Rabbit
Isotype	IgG
Size	20ul, 50ul, 100ul
Immunogen	The antiserum was produced against synthesized peptide derived from human TAT. AA range:255-304
Mol wt	50399
Species reactivity	Human, Mouse, Rat
Clonality	Polyclonal
Recommended application	IHC-p, ELISA
Concentration	1 mg/ml
Full name	TAT Antibody
Synonyms	TAT; Tyrosine aminotransferase; TAT; L-tyrosine:2-oxoglutarate aminotransferase

This product is for research use only, not for use in human, therapeutic or diagnostic procedure.

Background

This nuclear gene TAT (tyrosine aminotransferase) encodes a mitochondrial protein tyrosine aminotransferase which is present in the liver and catalyzes the conversion of L-tyrosine into p-hydroxyphenylpyruvate. Mutations in TAT cause tyrosinemia (type II, Richner-Hanhart syndrome), a disorder accompanied by major skin and corneal lesions, with possible mental retardation. A regulator gene for tyrosine aminotransferase is X-linked.

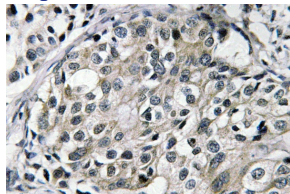
Recommended Dilution

IHC: 1: 100 - 1: 300

ELISA: 1: 40000

Not yet tested in other applications.

Images



Immunohistochemistry analysis of TAT antibody in paraffin-embedded human breast carcinoma tissue.

Storage

-20°C for one year