

IGF2 Polyclonal Antibody

Description

Product type	Primary Antibody
Code	BT-AP08851
Host	Rabbit
Isotype	IgG
Size	20ul, 50ul, 100ul
Immunogen	Synthesized peptide derived from part region of human protein
Mol wt	N/A
Species reactivity	Human, Mouse, Rat
Clonality	Polyclonal
Recommended application	WB, ELISA
Concentration	1 mg/ml
Full name	Insulin-like growth factor II
Synonyms	Insulin-like growth factor II (IGF-II;Somatomedin-A) [Cleaved into: Insulin-like growth factor II; Insulin-like growth factor II Ala-25 Del; Preptin]

This product is for research use only, not for use in human, therapeutic or diagnostic procedure.

Background

This gene encodes a member of the insulin family of polypeptide growth factors| which are involved in development and growth. It is an imprinted gene| expressed only from the paternal allele| and epigenetic changes at this locus are associated with Wilms tumour| Beckwith-Wiedemann syndrome| rhabdomyosarcoma| and Silver-Russell syndrome. A read-through INS-IGF2 gene exists| whose 5' region overlaps the INS gene and the 3' region overlaps this gene. Alternatively spliced transcript variants encoding different isoforms have been found for this gene.

Recommended Dilution

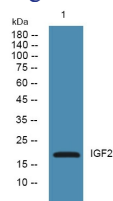
WB: 1: 500 - 1: 2000

ELISA: 1: 5000 - 1: 20000

ELISA: 1: 20000

Not yet tested in other applications.

Images



Western blot analysis of lysates from HCT116 cells, primary antibody was diluted at 1:1000, 4°C overnight

Storage

-20°C for 1 year