

TBC1D3A/B/C Polyclonal Antibody

Description

Product type	Primary Antibody
Code	BT-AP08852
Host	Rabbit
Isotype	IgG
Size	20ul, 50ul, 100ul
Immunogen	The antiserum was produced against synthesized peptide derived from human TBC1D3. AA range:481-530
Mol wt	62199
Species reactivity	Human
Clonality	Polyclonal
Recommended application	WB, IF, ELISA
Concentration	1 mg/ml
Full name	TBC1D3A/B/C Antibody
Synonyms	TBC1D3; PRC17; TBC1D3A; TBC1 domain family member 3; Prostate cancer gene 17 protein; Protein TRE17-alpha; Rab GTPase-activating protein PRC17; TBC1D3B; TBC1D3I; TBC1 domain family member 3B; TBC1D3C;

This product is for research use only, not for use in human, therapeutic or diagnostic procedure.

Background

TBC1D3 encodes a protein that is similar to TBC1 domain family, member 3. TBC1 domain family member 3 contains a TBC (Tre-2, Bub2p, and Cdc16p) domain, which is found in proteins involved in RAB GTPase signaling and vesicle trafficking. There are multiple copies of this gene located within a cluster of chemokine genes on chromosome 17q.

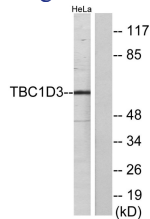
Recommended Dilution

WB: 1: 500 - 1: 2000

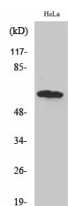
ELISA: 1: 20000

Not yet tested in other applications.

Images



Western blot analysis of lysates from HeLa cells, using TBC1D3 Antibody. The lane on the right is blocked with the synthesized peptide.



Western Blot analysis of various cells using TBC1D3A/B/C Polyclonal Antibody

Storage

-20°C for one year

501 Changsheng S Rd, Nanhu Dist, Jiaxing, Zhejiang, China

Tel: 86 21 31007137 | E-mail: save@bt-laboratory.com | www.bt-laboratory.com