

IGFBP3(Phospho Ser183) Polyclonal Antibody

Description

Product type	Primary Antibody
Code	BT-AP08855
Host	Rabbit
Isotype	IgG
Size	20ul, 50ul, 100ul
Immunogen	The antiserum was produced against synthesized peptide derived from human IGFBP-3 around the phosphorylation site of Ser183. AA range:151-200
Mol wt	31674
Species reactivity	Human, Mouse
Clonality	Polyclonal
Recommended application	WB, IHC-p, IF, ELISA
Concentration	1 mg/ml
Full name	Insulin-like growth factor-binding protein 3
Synonyms	Insulin-like growth factor-binding protein 3; IGFBP3; IBP3; Insulin-like growth factor-binding protein 3; IBP-3; IGF-binding protein 3; IGFBP-3

This product is for research use only, not for use in human, therapeutic or diagnostic procedure.

Background

This gene is a member of the insulin-like growth factor binding protein (IGFBP) family and encodes a protein with an IGFBP domain and a thyroglobulin type-I domain. The protein forms a ternary complex with insulin-like growth factor acid-labile subunit (IGFALS) and either insulin-like growth factor (IGF) I or II. In this form it circulates in the plasma prolonging the half-life of IGFs and altering their interaction with cell surface receptors. Alternate transcriptional splice variants encoding different isoforms have been characterized.

Recommended Dilution

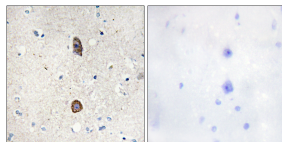
WB: 1: 500 - 1: 2000

IHC-p: 1: 100 - 1: 300

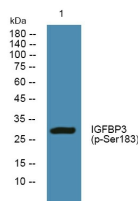
ELISA: 1: 5000

Not yet tested in other applications.

Images



Immunohistochemistry analysis of paraffin-embedded human brain, using IGFBP-3 (Phospho-Ser183) Antibody. The picture on the right is blocked with the phospho peptide.



Western blot analysis of lysates from Jarkat cells, primary antibody was diluted at 1:1000, 4°C overnight

Storage

-20°C for 1 year

501 Changsheng S Rd, Nanhu Dist, Jiaxing, Zhejiang, China

Tel: 86 21 31007137 | E-mail: save@bt-laboratory.com | www.bt-laboratory.com