

## TBPL2 Polyclonal Antibody

### Description

<b>Product type</b>	Primary Antibody
<b>Code</b>	BT-AP08861
<b>Host</b>	Rabbit
<b>Isotype</b>	IgG
<b>Size</b>	20ul, 50ul, 100ul
<b>Immunogen</b>	The antiserum was produced against synthesized peptide derived from human TBPL2. AA range:81-130
<b>Mol wt</b>	41524
<b>Species reactivity</b>	Human
<b>Clonality</b>	Polyclonal
<b>Recommended application</b>	WB, IHC-p, ELISA
<b>Concentration</b>	1 mg/ml
<b>Full name</b>	TBPL2 Antibody
<b>Synonyms</b>	TBPL2; TBP2; TRF3; TATA box-binding protein-like protein 2; TBP-like protein 2; TATA box-binding protein-related factor 3; TBP-related factor 3

This product is for research use only, not for use in human, therapeutic or diagnostic procedure.

### Background

TBPL2 (TATA-Box Binding Protein Like 2) is a Protein Coding gene. Among its related pathways are RNA Polymerase II Transcription Initiation And Promoter Clearance and Epstein-Barr virus infection. GO annotations related to this gene include transcription factor activity, sequence-specific DNA binding. An important paralog of this gene is TBPL1.

### Recommended Dilution

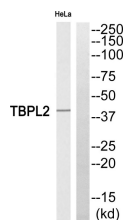
WB: 1: 500 - 1: 2000

IHC: 1: 100 - 1: 300

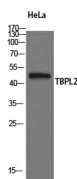
ELISA: 1: 5000

Not yet tested in other applications.

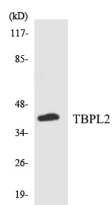
### Images



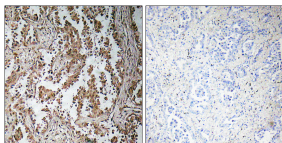
Western blot analysis of TBPL2 Antibody. The lane on the right is blocked with the TBPL2 peptide.



Western Blot analysis of HeLa cells using TBPL2 Polyclonal Antibody



Western blot analysis of the lysates from COLO205 cells using TBPL2 antibody.



Immunohistochemistry analysis of paraffin-embedded human lung carcinoma, using TBPL2 Antibody. The lane on the right is blocked with the TBPL2 peptide.

### Storage

-20°C for one year

501 Changsheng S Rd, Nanhu Dist, Jiaxing, Zhejiang, China

Tel: 86 21 31007137 | E-mail: [save@bt-laboratory.com](mailto:save@bt-laboratory.com) | [www.bt-laboratory.com](http://www.bt-laboratory.com)