

TBX1 Polyclonal Antibody

Description

Product type	Primary Antibody
Code	BT-AP08863
Host	Rabbit
Isotype	IgG
Size	20ul, 50ul, 100ul
Immunogen	The antiserum was produced against synthesized peptide derived from human TBX1. AA range:311-360
Mol wt	43133
Species reactivity	Human
Clonality	Polyclonal
Recommended application	WB, IHC-p, IF, ELISA
Concentration	1 mg/ml
Full name	TBX1 Antibody
Synonyms	TBX1; T-box transcription factor TBX1; T-box protein 1; Testis-specific T-box protein

This product is for research use only, not for use in human, therapeutic or diagnostic procedure.

Background

TBX1 is a member of a phylogenetically conserved family of genes that share a common DNA-binding domain, the T-box. T-box genes encode transcription factors involved in the regulation of developmental processes. This gene product shares 98% amino acid sequence identity with the mouse ortholog. DiGeorge syndrome (DGS)/velocardiofacial syndrome (VCFS), a common congenital disorder characterized by neural-crest-related developmental defects, has been associated with deletions of chromosome 22q11. , where this gene has been mapped. Studies using mouse models of DiGeorge syndrome suggest a major role for this gene in the molecular etiology of DGS/VCFS. Several alternatively spliced transcript variants encoding different isoforms have been described for this gene.

Recommended Dilution

WB: 1: 500 - 1: 2000

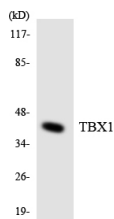
IHC: 1: 100 - 1: 300

IF: 1: 200 - 1: 1000

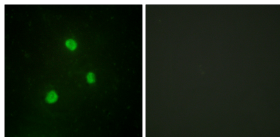
ELISA: 1: 20000

Not yet tested in other applications.

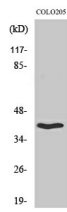
Images



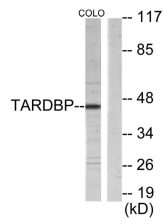
Western blot analysis of the lysates from 293 cells using TBX1 antibody.



Immunofluorescence analysis of A549 cells, using TBX1 Antibody. The picture on the right is blocked with the synthesized peptide.



Western Blot analysis of various cells using TBX1 Polyclonal Antibody cells nucleus.



Western blot analysis of lysates from COLO205 cells, using TBX1 Antibody. The lane on the right is blocked with the synthesized peptide.

Storage

-20°C for one year

501 Changsheng S Rd, Nanhu Dist, Jiaxing, Zhejiang, China

Tel: 86 21 31007137 | E-mail: save@bt-laboratory.com | www.bt-laboratory.com