

TBX10 Polyclonal Antibody

Description

Product type	Primary Antibody
Code	BT-AP08864
Host	Rabbit
Isotype	IgG
Size	20ul, 50ul, 100ul
Immunogen	The antiserum was produced against synthesized peptide derived from human TBX10. AA range:261-310
Mol wt	42341
Species reactivity	Human
Clonality	Polyclonal
Recommended application	WB, IHC-p, ELISA
Concentration	1 mg/ml
Full name	TBX10 Antibody
Synonyms	TBX10; TBX7; T-box transcription factor TBX10; T-box protein 10

This product is for research use only, not for use in human, therapeutic or diagnostic procedure.

Background

TBX10 encodes a member of the T-box family of transcription factors. These transcription factors share a DNA-binding domain called the T-box, and play a role in several developmental processes including early embryonic cell fate and organogenesis. The encoded protein is a member of the T-box 1 subfamily. Mutations in this gene are thought to be a cause of isolated cleft lip with or without cleft palate.

Recommended Dilution

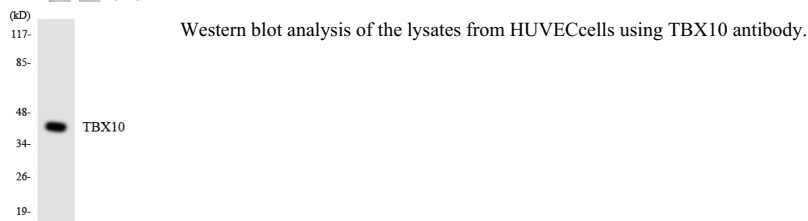
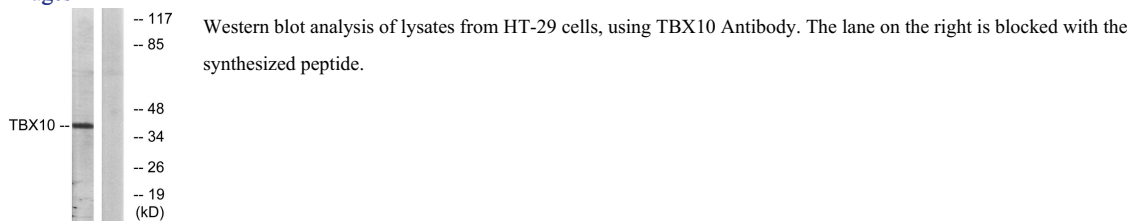
WB: 1: 500 - 1: 2000

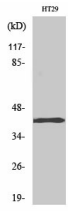
IHC: 1: 100 - 1: 300

ELISA: 1: 5000

Not yet tested in other applications.

Images





Western Blot analysis of various cells using TBX10 Polyclonal Antibody cells nucleus.

Storage

-20°C for one year

501 Changsheng S Rd, Nanhu Dist, Jiaxing, Zhejiang, China

Tel: 86 21 31007137 | E-mail: save@bt-laboratory.com | www.bt-laboratory.com