

TBX22 Polyclonal Antibody

Description

Product type	Primary Antibody
Code	BT-AP08872
Host	Rabbit
Isotype	IgG
Size	20ul, 50ul, 100ul
Immunogen	The antiserum was produced against synthesized peptide derived from human TBX22. AA range:1-50
Mol wt	57910
Species reactivity	Human
Clonality	Polyclonal
Recommended application	WB, IHC-p, ELISA
Concentration	1 mg/ml
Full name	TBX22 Antibody
Synonyms	TBX22; TBOX22; T-box transcription factor TBX22; T-box protein 22

This product is for research use only, not for use in human, therapeutic or diagnostic procedure.

Background

TBX22 is a member of a phylogenetically conserved family of genes that share a common DNA-binding domain, the T-box. T-box genes encode transcription factors involved in the regulation of developmental processes. Mutations in this gene have been associated with the inherited X-linked disorder, Cleft palate with ankyloglossia, and it is believed to play a major role in human palatogenesis. Alternatively spliced transcript variants encoding different isoforms have been found for TBX22.

Recommended Dilution

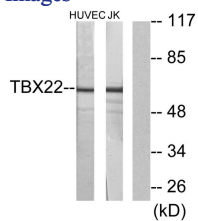
WB: 1: 500 - 1: 2000

IHC: 1: 100 - 1: 300

ELISA: 1: 20000

Not yet tested in other applications.

Images



Western blot analysis of lysates from Jurkat and HUVEC cells, using TBX22 Antibody. The lane on the right is blocked with the synthesized peptide.

Storage

-20°C for one year