

## TBX3 Polyclonal Antibody

### Description

<b>Product type</b>	Primary Antibody
<b>Code</b>	BT-AP08873
<b>Host</b>	Rabbit
<b>Isotype</b>	IgG
<b>Size</b>	20ul, 50ul, 100ul
<b>Immunogen</b>	The antiserum was produced against synthesized peptide derived from human TBX3. AA range:301-350
<b>Mol wt</b>	79389
<b>Species reactivity</b>	Human, Mouse, Rat
<b>Clonality</b>	Polyclonal
<b>Recommended application</b>	WB, ELISA
<b>Concentration</b>	1 mg/ml
<b>Full name</b>	TBX3 Antibody
<b>Synonyms</b>	TBX3; T-box transcription factor TBX3; T-box protein 3

**This product is for research use only, not for use in human, therapeutic or diagnostic procedure.**

### Background

TBX3 (T-box 3) is a member of a phylogenetically conserved family of genes that share a common DNA-binding domain, the T-box. T-box genes encode transcription factors involved in the regulation of developmental processes. This protein is a transcriptional repressor and is thought to play a role in the anterior/posterior axis of the tetrapod forelimb. Mutations in TBX3 cause ulnar-mammary syndrome, affecting limb, apocrine gland, tooth, hair, and genital development. Alternative splicing of TBX3 results in three transcript variants encoding different isoforms; however, the full length nature of one variant has not been determined.

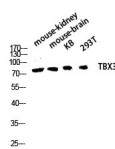
### Recommended Dilution

WB: 1: 500 - 1: 2000

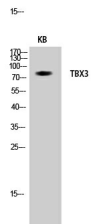
ELISA: 1: 5000

Not yet tested in other applications.

### Images



Western blot analysis of mouse-kidney mouse-brain KB 293T lysis using TBX3 antibody. Antibody was diluted at 1:1000



Western Blot analysis of KB cells using TBX3 Polyclonal Antibody diluted at 1:1000

## Storage

-20°C for one year

501 Changsheng S Rd, Nanhu Dist, Jiaxing, Zhejiang, China

Tel: 86 21 31007137 | E-mail: [save@bt-laboratory.com](mailto:save@bt-laboratory.com) | [www.bt-laboratory.com](http://www.bt-laboratory.com)