

T-cadherin Polyclonal Antibody

Description

Product type	Primary Antibody
Code	BT-AP08875
Host	Rabbit
Isotype	IgG
Size	20ul, 50ul, 100ul
Immunogen	The antiserum was produced against synthesized peptide derived from human CDH13. AA range:331-380
Mol wt	78287
Species reactivity	Human, Mouse, Rat
Clonality	Polyclonal
Recommended application	WB, IHC-p, IF, ELISA
Concentration	1 mg/ml
Full name	T-cadherin Antibody
Synonyms	CDH13; CDHH; Cadherin-13; Heart cadherin; H-cadherin; P105; Truncated cadherin; T-cad; T-cadherin

This product is for research use only, not for use in human, therapeutic or diagnostic procedure.

Background

CDH13 encodes a member of the cadherin superfamily. The cadherin 13 is localized to the surface of the cell membrane and is anchored by a GPI moiety, rather than by a transmembrane domain. The protein lacks the cytoplasmic domain characteristic of other cadherins, and so is not thought to be a cell-cell adhesion glycoprotein. This protein acts as a negative regulator of axon growth during neural differentiation. It also protects vascular endothelial cells from apoptosis due to oxidative stress, and is associated with resistance to atherosclerosis. The gene is hypermethylated in many types of cancer. Alternative splicing results in multiple transcript variants encoding different isoforms.

Recommended Dilution

WB: 1: 500 - 1: 2000

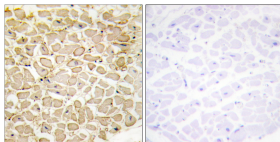
IHC: 1: 100 - 1: 300

IF: 1: 200 - 1: 1000

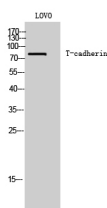
ELISA: 1: 20000

Not yet tested in other applications.

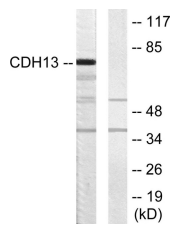
Images



Immunohistochemistry analysis of paraffin-embedded human heart tissue, using CDH13 Antibody. The picture on the right is blocked with the synthesized peptide.



Western Blot analysis of LOVO cells using T-cadherin Polyclonal Antibody



Western blot analysis of lysates from LOVO cells, using CDH13 Antibody. The lane on the right is blocked with the synthesized peptide.

Storage

-20°C for one year

501 Changsheng S Rd, Nanhu Dist, Jiaxing, Zhejiang, China

Tel: 86 21 31007137 | E-mail: save@bt-laboratory.com | www.bt-laboratory.com