

IGFN1 Polyclonal Antibody

Description

Product type	Primary Antibody
Code	BT-AP08879
Host	Rabbit
Isotype	IgG
Size	20ul, 50ul, 100ul
Immunogen	Recombinant Protein of IGFN1
Mol wt	N/A
Species reactivity	Human, Mouse, Rat
Clonality	Polyclonal
Recommended application	WB, IHC-p, IF
Concentration	
Full name	Immunoglobulin-like and fibronectin type III domain-containing protein 1
Synonyms	Immunoglobulin-like and fibronectin type III domain-containing protein 1; Immunoglobulin-like and fibronectin type III domain-containing protein 1; EEF1A2-binding protein 1; KY-interacting protein 1

This product is for research use only, not for use in human, therapeutic or diagnostic procedure.

Background

Contains 4 fibronectin type-III domains. Contains 5 Ig-like (immunoglobulin-like) domains. subunit: Interacts with KY. tissue specificity: Expressed in skeletal muscle.

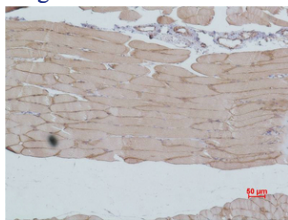
Recommended Dilution

WB: 1: 2000 - 1: 5000

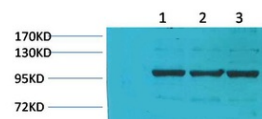
IHC: 1: 200 - 1: 500

Not yet tested in other applications.

Images



Immunohistochemical analysis of paraffin-embedded Mouse Skeletal Muscle Tissue using IGFN1 Polyclonal Antibody.



Western blot analysis of 1) Pig Skeletal Muscle Tissue, 2) Rat Skeletal Muscle Tissue, 3) Rat Skeletal Muscle Tissue using IGFN1 Polyclonal Antibody. Secondary antibody was diluted at 1:20000

Storage

-20°C for 1 year