

## TCEAL3/5/6 Polyclonal Antibody

### Description

<b>Product type</b>	Primary Antibody
<b>Code</b>	BT-AP08882
<b>Host</b>	Rabbit
<b>Isotype</b>	IgG
<b>Size</b>	20ul, 50ul, 100ul
<b>Immunogen</b>	The antiserum was produced against synthesized peptide derived from human TCEAL3. AA range:141-190
<b>Mol wt</b>	22502
<b>Species reactivity</b>	Human
<b>Clonality</b>	Polyclonal
<b>Recommended application</b>	IHC-p, ELISA
<b>Concentration</b>	1 mg/ml
<b>Full name</b>	TCEAL3/5/6 Antibody
<b>Synonyms</b>	TCEAL3; MSTP072; Transcription elongation factor A protein-like 3; TCEA-like protein 3; Transcription elongation factor S-II protein-like 3; TCEAL5; Transcription elongation factor A protein-like 5; T

**This product is for research use only, not for use in human, therapeutic or diagnostic procedure.**

### Background

TCEAL3 (transcription elongation factor A like 3) encodes a member of the transcription elongation factor A (SII)-like (TCEAL) gene family. Members of this family contain TFA domains and may function as nuclear phosphoproteins that modulate transcription in a promoter context-dependent manner. Multiple family members are located on the X chromosome. Alternative splicing results in multiple transcript variants encoding a single isoform.

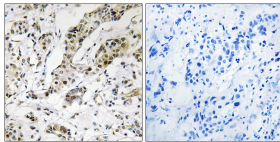
### Recommended Dilution

IHC: 1: 100 - 1: 300

ELISA: 1: 40000

Not yet tested in other applications.

### Images



Immunohistochemistry analysis of paraffin-embedded human breast carcinoma, using TCEAL3/5/6 Antibody. The picture on the right is blocked with the synthesized peptide.

### Storage

-20°C for one year