

DAB2 Rabbit Polyclonal Antibody

Description

Product type	Primary Antibody
Code	BT-AP08887
Host	Rabbit
Isotype	IgG
Size	20ul, 50ul, 100ul
Immunogen	Synthesized peptide derived from human DAB2
Mol wt	N/A
Species reactivity	Human, Mouse, Rat
Clonality	Polyclonal
Recommended application	WB
Concentration	1 mg/ml
Full name	DAB2
Synonyms	DAB2; Disabled homolog 2; DOC-2; Differentially-expressed protein 2)

This product is for research use only, not for use in human, therapeutic or diagnostic procedure.

Background

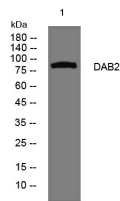
This gene encodes a mitogen-responsive phosphoprotein. It is expressed in normal ovarian epithelial cells| but is down-regulated or absent from ovarian carcinoma cell lines| suggesting its role as a tumor suppressor. This protein binds to the SH3 domains of GRB2| an adaptor protein that couples tyrosine kinase receptors to SOS (a guanine nucleotide exchange factor for Ras)| via its C-terminal proline-rich sequences| and may thus modulate growth factor/Ras pathways by competing with SOS for binding to GRB2. Alternatively spliced transcript variants encoding different isoforms have been found for this gene.

Recommended Dilution

WB: 1: 500 - 1: 2000

Not yet tested in other applications.

Images



Western blot analysis of lysates from DU145 cells, primary antibody was diluted at 1:1000, 4°C overnight

Storage

-20°C for 1 year